

PRODUCT PROFILE



Require a complete solution to process the pile of financial point-of-sale data your store locations are collecting? Trying to interface your data to your general ledger, including sales transactions, payroll, account receivables and payables?

Aloha TransManager provides your business with a complete integrated solution – from the front-of-the-house through the back office to the central office.

TransManager eliminates manual re-entry of data produced by your Aloha POS or Aloha BackOffice systems. You already have the best in POS and back office systems, so you're halfway there. Now it's time to link all the information you've gathered.

TransManager is an extremely user-friendly interface utility tool that converts your POS and back office management data into many leading PC accounting systems and payroll services. TransManager can create electronic accounting transactions from the POS and back office systems to accounting systems such as ACCPAC, QuickBooks, Great Plains and others.

Easy-to-use Wizards

Aloha TransManager makes managing your restaurants easy no matter how many stores you have. With graphical wizards to lead the way, Aloha TransManager asks for the information that it needs, then you just input the data relevant to your stores.

Simple Processing

The Process function reads the interface code, source, and destination information, then creates a file your accounting system can understand and use.

Whether you are processing one store or 100 stores, TransManager makes it as easy as clicking "Process To-do List", typing in your business date, and you're done.

File	Link C.	Business	Seq.	Description	Batch Total	Process	Process
6	H8Sales	10/21/99	81	Highway	887.05	10/22/99	Complete
6	USSales	10/21/99	82	US Sales	11144.51	10/22/99	Complete
6	USSales	10/21/99	83	US Sales	11144.51	10/22/99	Complete
6	H8Sales	10/22/99	84	Highway	887.05	10/22/99	Complete
6	USSales	10/22/99	85	US Sales	11144.51	10/22/99	Complete

Aloha TransManager

General Ledger Batch Template

With Aloha TransManager, interfaces are added based on store numbers that you've entered. This allows the system to take the financial data from your various stores and compile it in a general ledger. An Auto-Find feature is included with the Aloha TransManager General Ledger template, which can be used to select Aloha POS data, the dollar amount, or Debit/Credit criteria.

The TransManager Advantage

Whether it's financial information to a general ledger, inventory receipts to accounts payable, or timekeeping to payroll, TransManager enables interfacing to multiple files for converting data into multiple accounting formats. TransManager runs from your Microsoft Windows™ desktop or the Aloha Manager. Save valuable time, increase accuracy and cut back on tedious data re-entry. Get faster and more precise information by integrating your Aloha POS system to your central office accounting and payroll systems.

Automate and consolidate your financial information with Aloha TransManager.



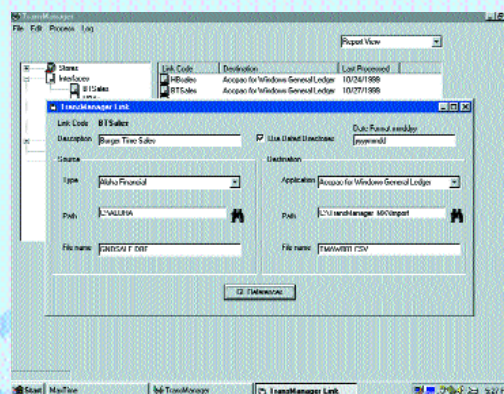
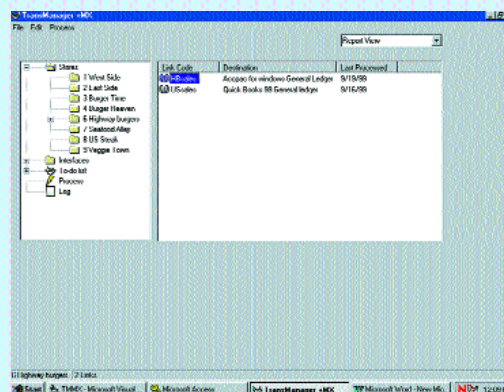
Behind the cutting-edge technology stands Aloha Technologies: a customer-focused company with the experience, strength and resources to provide your organization the competitive advantage it needs to be successful now and into the future. That makes Aloha TransManager more than just a solid foundation for you to manage your business – *that makes it a smart business decision.*

Benefits:

- Consolidates individual line item entries into one consolidated account
- Microsoft Windows™-based, 32-bit compliant
- Unsurpassed management functionality
- Eliminates human error and tedious manual re-entry of data
- Provides accurate, consistent and auditable accounting entries
- Provides controls from the front-of-the-house through the back office to the central office
- Saves time by processing daily data files from Aloha that can be easily imported whenever the user is ready

Features/Functions:

- Processes Aloha POS and back office data files
- Translates these data files into destination accounting data your computerized accounting system can understand and use
- Auto-Find feature is included
- TransManager can process an unlimited number of stores
- Links Aloha POS & BackOffice to top-selling high-end and entry-level accounting solutions
- Automates the creation of balanced entry transactions for your accounting system and payroll system or service
- Multiple interfaces from various Aloha data sources to various destination accounting applications
- Detailed transaction log that provides date, sequence and processing status for complete auditing
- A "To-do" list feature that enables faster processing for multiple stores
- Can be configured to process transactions at the store level and then email the attached results automatically
- Multi-user network support is available for the corporate office
- An ongoing compliancy between Aloha POS and the supported accounting and payroll system or service
- Provides error trapping with message indication
- Allows for mapping of transactions by individual Aloha category to unique account or consolidation by account
- Generates generic ASCII CSV or XML files of accounting transactions including payroll by date range
- Generates data files for new and terminated employees



Available Interfaces

Aloha TransManager offers the following interface solutions. Choose one, a selection, or all to complete your financial business needs.

- Aloha POS Sales/Tender transactions to General Ledger, including sales by category, sales tax, tenders, promotions, coupons, etc.
- Aloha POS House Account transactions to your Accounts Receivable
- Aloha POS Time and Attendance to the Payroll system or service
- Aloha BackOffice Inventory Receipts to your Accounts Payable
- Aloha BackOffice Inventory Costs of Goods and Adjustments to your General Ledger

For more information about TransManager or other Aloha products, partners, customers and services, visit our web site at www.alohapos.com or call us at 800.79.ALOHA